



AN OVERVIEW OF  
**MARTINREA**  
**INTERNATIONAL INC.**



# 03

Overview

# 04

Martinrea's Journey

# 05

Culture

# 06

Sustainability

# 07

Lightweight Structures

# 08

Propulsion Systems

# 09

Flexible Manufacturing Group

# 10

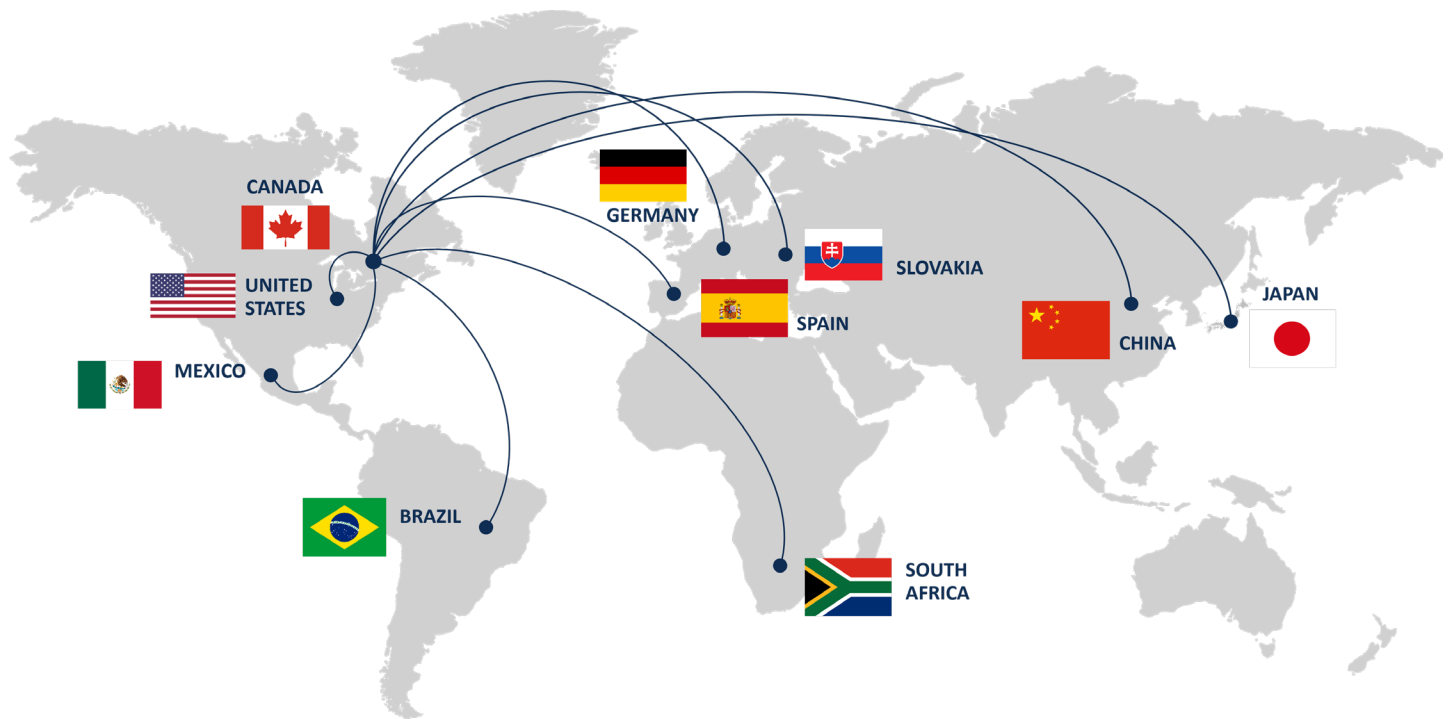
Graphene Technology

# 11

Innovation



# OVERVIEW



18k

SKILLED TEAM  
MEMBERS

57

LOCATIONS



10

COUNTRIES

Martinrea International Inc. is a diversified and global automotive supplier engaged in the design, development, and manufacturing of highly engineered, value-added Lightweight Structures and Propulsion Systems, primarily focused on the automotive sector. We are using our lightweighting expertise in metal forming, aluminum casting, fluid systems and flexible manufacturing to serve our customers with tailor-made system solutions.

Our vision is making people's lives better by being the best supplier we can be, in the products we make and the services we provide.

In pursuing our vision and mission, we developed a set of 10 Guiding Principles to be communicated, reinforced, and adopted throughout the Company.

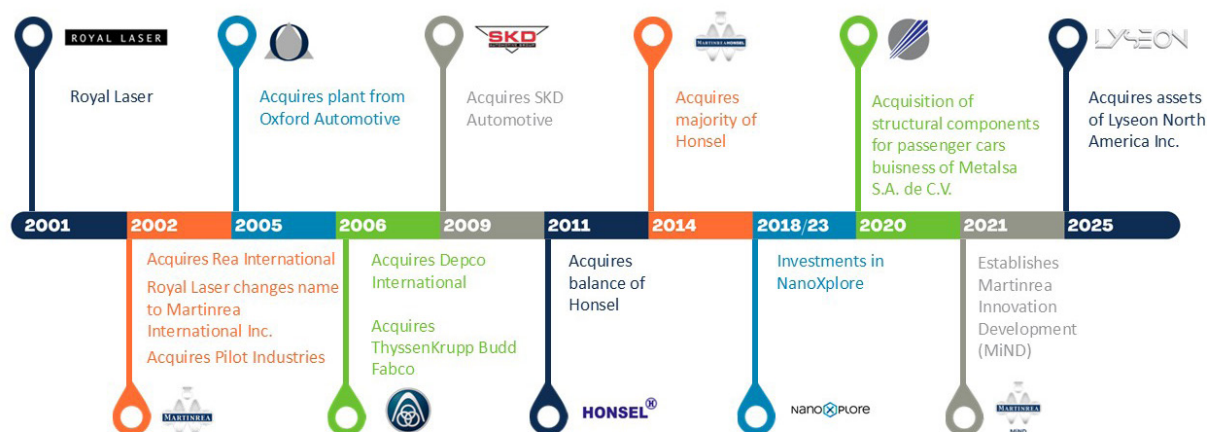
-  THE GOLDEN RULE:  
TREAT EVERYONE WITH  
DIGNITY AND RESPECT
-  WE MAKE GREAT,  
HIGH QUALITY  
PRODUCTS
-  EVERY LOCATION  
MUST BE A CENTER  
OF EXCELLENCE
-  DISCIPLINE AND  
OWNERSHIP  
ARE KEY
-  WE STRIVE FOR  
GREATNESS
-  WE ARE A  
DIVERSE AND  
INCLUSIVE TEAM
-  CHALLENGES  
MAKE US BETTER
-  THINK  
DIFFERENT
-  WORK HARD,  
PLAY HARD
-  LEAVE IT  
BETTER



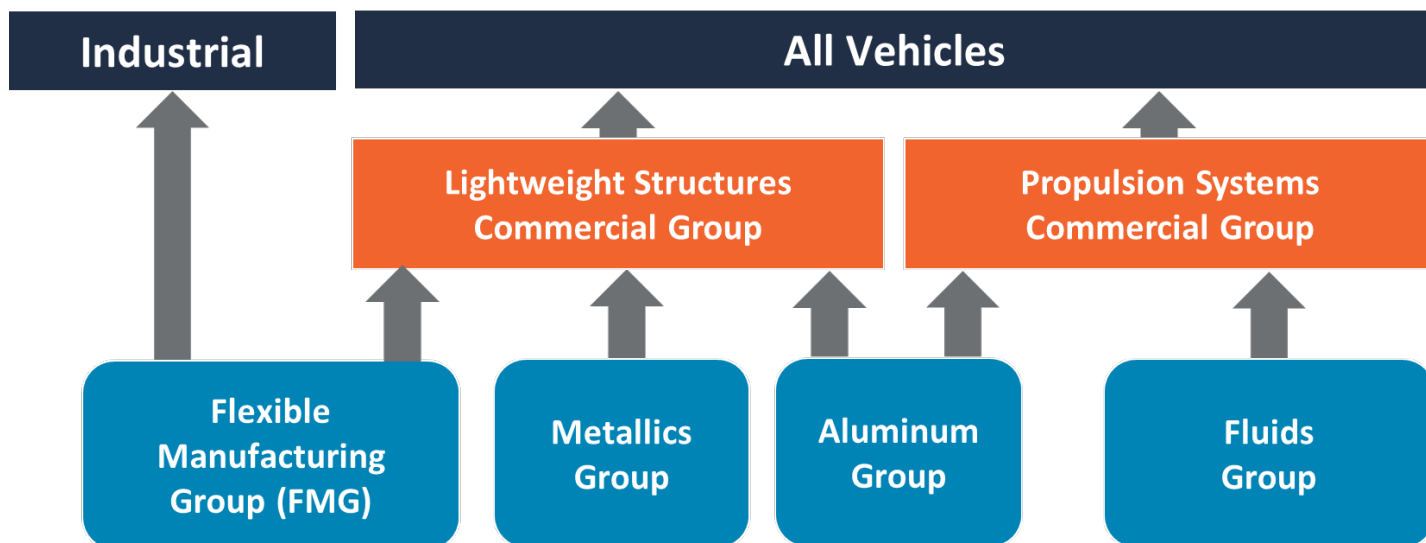
# OUR JOURNEY

Founded in 2001, Martinrea International is one of the leading Tier One automotive suppliers of vehicle parts, assemblies, and modules. We are proud of our rich history and our status as a top supplier for more than 20 years. From our inception, we have grown organically and by acquisition to become one of the fastest growing automotive parts suppliers in the world.

Our business and growth strategies are as groundbreaking as our capabilities – attracting and retaining the best talent and services.



## COMMERCIAL APPROACH



# CULTURE

---

Sustainability, as with any aspect of the Company, has to start with culture. We believe a great culture is core to a sustainable business and successful company.

From the materials we utilize to the locations we serve, Martinrea considers sustainability a key aspect of the company's vision and mission.

At the core of our One Martinrea culture is a Golden Rule philosophy, based on treating others the way we want to be treated... with dignity and respect. It also means following our 10 Guiding Principles in our business and operations, as well as in how we interact with our customers, suppliers, stakeholders, and our communities.

The Company's approach to health, safety and inclusion are at the core of Martinrea's culture of making people's lives better. We treat people with dignity and respect. We promote sustainability by striving to respect the environment and laws, supporting universal human rights, and contributing to communities around the world. Martinrea's sustainability efforts include providing a healthy and safe workplace for all team members while supporting a diverse and inclusive environment.

Martinrea believes a successful sustainability strategy starts with a strong culture and effective leadership by the Executive Management team and the Board. The Company's most important assets are its people and its reputation for integrity in both its products and business practices. We believe the organization must be clear on what it stands for, and honour its commitment to its people, customers, owners, lenders, and communities. The Board expects the Executive Management team to manage the Company in a manner that enhances value for all our stakeholders while maintaining the highest level of integrity.



# CULTURE & SUSTAINABILITY



The Company's approach to sustainability is not formulaic in response to popular trends; it is the core of Martinrea's culture to make people's lives better. It is a given that people are to be treated the way they wish to be treated, with dignity and respect. It is foundational that a person must be safe in our Company, physically and emotionally, that prejudice in any form is unacceptable and that opportunity is provided equally to all. It is also foundational that we as a Company promote sustainability in all we do in our communities, by striving to respect (or improve using innovative technology) the environment, by supporting good causes in communities, and by being an employer of choice. These realities outline what sustainability means to us.

Martinrea aims to ensure the responsible use of natural resources and the prevention and reduction of negative environmental impacts like emissions, energy and water consumption, or waste generation, so as not to endanger the environment. The Company monitors its operations to ensure compliance with environmental requirements and standards, and takes action to prevent and correct problems, if needed.

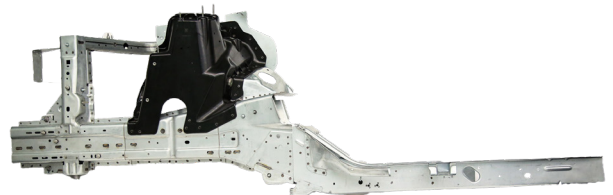
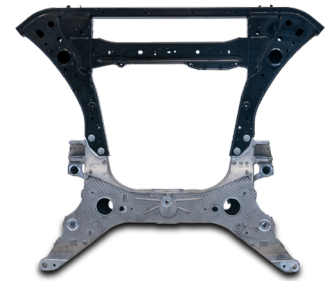
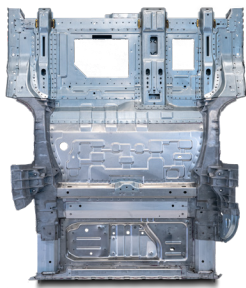
# LIGHTWEIGHT STRUCTURES

---

Martinrea is proud to be a leading system partner of Lightweight Structures for aluminum and a blend of advanced steel materials, especially for the automotive industry. With many years of casting and structural manufacturing experience, customers know they can rely on our products and expertise.

There is a need for light, strong, and safe body structures and suspension components in the rapidly changing automotive industry. Lightweighting is a key strategy in enabling our customers to reduce overall vehicle weight, and the resulting CO<sub>2</sub> emissions, through improved fuel efficiency or, in the case of electric vehicles, achieve a greater range per charge.

Our product portfolio includes a wide variety of advanced lightweight materials, forming processes and joining methods. These enable mass-optimized solutions for body-in-white, chassis and electric vehicle structures.



## PRODUCT EXAMPLES

- Integral Cast or Fabricated Front and Rear Subframes
- Hollow and Solid, Front, and Rear Knuckles, Control Arms, Links, Nodes Machined and Assembled
- Cast Front Shock Towers, Torque Boxes, Cross Members
- Multi-Material Assemblies (e.g. Floor and Rail Assemblies)
- Exterior and Interior Trim and Non-Automotive Products with Individual Surface Textures and Alloys

## MANUFACTURING PROCESS

- High Pressure Die Casting (50 High Pressure Die Casting Machines <700 - 4,500t)
- Low Pressure Die Casting and Sand Casting (Fully automated production lines)
- Stamping (600T-3000T), Hot Stamping, Roll Forming
- Spot and MIG Welding
- E-Coating
- Aluminum Rolling

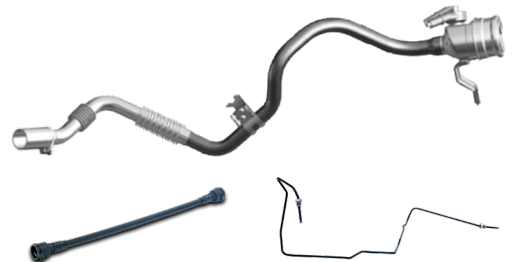
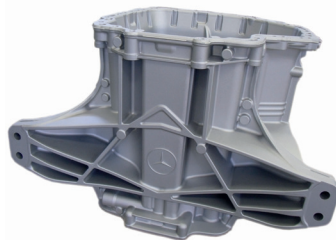
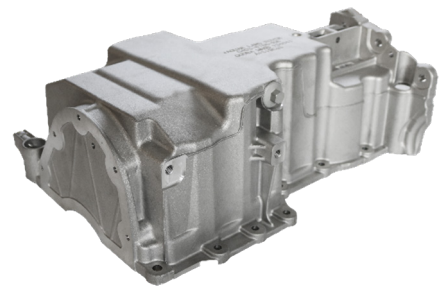
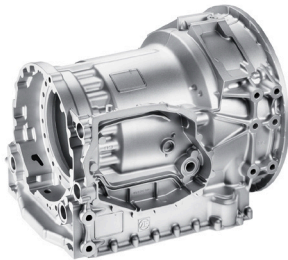
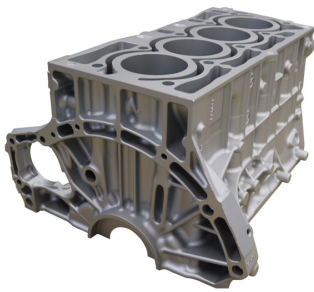


# PROPULSION SYSTEMS

---

Martinrea develops outstanding Propulsion Solutions that move vehicle advancements forward. Our engine, transmission, E-Mobility components, thermal and fluid management system products are built to drive power and performance while contributing to the reduction of vehicle weight.

We utilize state-of-the-art high and low pressure die casting equipment to deliver the most current lightweight and high-tech aluminum engine blocks and engine components of world-class quality for our customers. With our long casting history and experience, we are a specialist for transmission housings for heavy-duty trucks, buses and passenger cars as well as for battery housings and cooling lines. As one of Martinrea's core offerings, our fluid and thermal product line, including fuel filler pipes, brake lines and thermal management components, is recognized as high-value and vertical integration-friendly at our locations globally.



## PRODUCT EXAMPLES

- Cubed and super cubed Engine Blocks I4 - V12
- Cam Carriers, Oil Pans and other Engine Components - machined and with assembly
- Transmission Housings
- Battery Frames and E-Motor Housings
- Fuel Filler Pipes, Brake Lines and Thermal Management Systems

## MANUFACTURING PROCESS

- High Pressure Die Casting (50 High Pressure Die Casting Machines <700 - 4,500t)
- Gravity Die Casting
- Low Pressure Die Casting and Sand Casting (Fully automated production lines)
- X-Ray, Heat Treating, High Speed CNC Machining
- Forming, Bending, Cutting, Welding, Coating

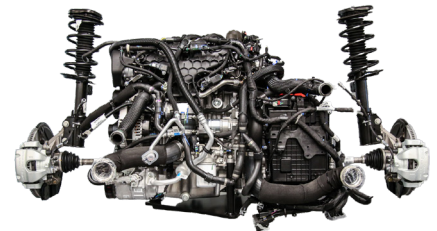
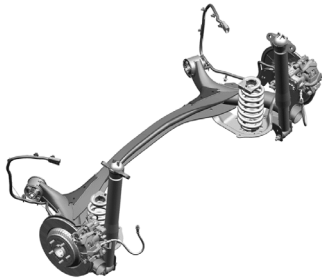
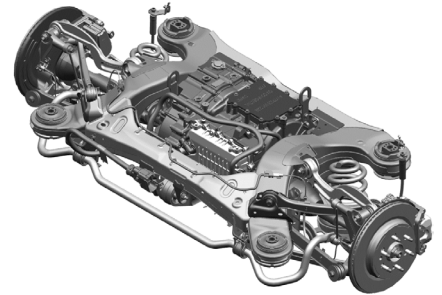
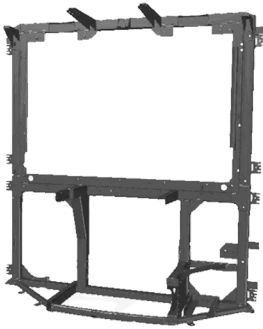


# FLEXIBLE MANUFACTURING GROUP (FMG)

---

In our six manufacturing locations in US, Mexico, and Canada, we develop and produce complex assemblies in over one million square feet of manufacturing space for our automotive and industrial customers in a wide range of business.

We are proud to provide just-in-time manufacturing and vertical integration expertise and are renowned for our automotive supplier success. We have also set our sights on complex assemblies in agricultural, medium duty trucks and aerospace.



## PRODUCT EXAMPLES

- Complex Assemblies
- Engine Dress, Front and Rear Modules, Front and Rear Verticals
- Complete Brake Corner build up for the Automotive Industry
- Complex Structural Weldments, Fuel Tanks, Reservoirs, Heat Exchangers and Bus Frames for the Industrial Markets

## MANUFACTURING PROCESS

- Machining
- Laser cut & bend
- MIG and TIG welding
- Paint (powder and wet)

## THE ROYAL AUTOMOTIVE GROUP (ROLLSTAR)

FMG is proud to offer the very specialized products produced by our Rollstar division, a leading supplier of exterior moldings and decorative trim. Sometimes referred to as vehicle jewelry, these Class A products require specialized engineering and a unique manufacturing process in order to meet the high expectations of our customers.

# GRAPHENE TECHNOLOGY

PATENT  
PROTECTION  
TECHNOLOGY

IMPROVED  
CHEMICAL  
RESISTANCE

LIGHTWEIGHT

UTILIZES CURRENT  
MANUFACTURING  
EQUIPMENT  
AND PROCESSES

IMPROVED  
HIGH  
TEMPERATURE  
STRENGTH

SAVES ON TOOLING  
BY USING CURRENT  
OFF-THE-SHELF CLIPS

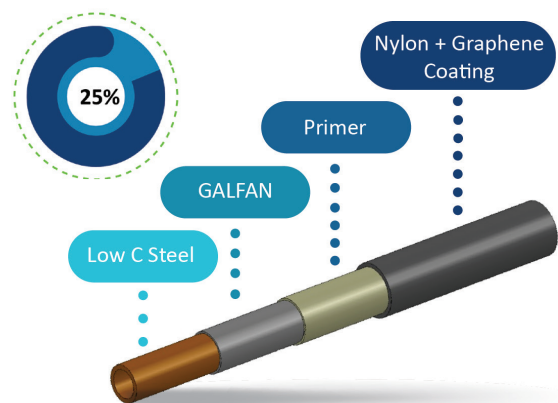
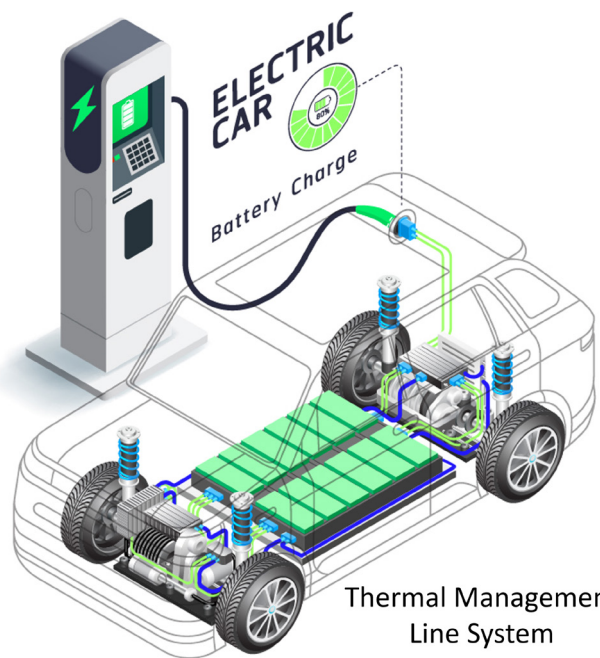
SUPERIOR  
ABRASION  
PROTECTION

We are dedicated to pushing the boundaries of innovation, and our exploration of Graphene has led to a remarkable breakthrough.

Graphene possesses unique properties holding the potential to revolutionize the industry.

With a strength 200 times greater than steel, Graphene offers unique durability. Its remarkable thermal and electrical conductivity surpasses even traditional silver and copper conductors. This opens a world of possibilities for enhancing energy efficiency and optimizing electronic systems. This lightweight solution is reshaping industry standards and outperforming traditional materials.

Martinrea is committed to harnessing the potential of graphene and integrating it into cutting-edge solutions. We aim to unlock new frontiers, delivering advanced products that redefine industry standards and contribute to a more sustainable future.



# INNOVATION

Innovation has always been a key part of the Martinrea culture. Our experience and thirst for knowledge opens up new opportunities to raise development work to new levels of innovation. This knowledge, and the passion of our engineers, is transferred into our products and processes, offering our customers tomorrow's solutions.

Throughout our history, we have introduced a variety of innovative products to our customers, including graphene-enhanced brake lines and capless fuel fillers. We have also introduced multiple process innovations, including the joining of steel and aluminum in automotive assemblies, flexible weld lines in our metallics business, and micro spraying, among others.

## WE SUPPORT OUR CUSTOMERS FROM THE FIRST PRODUCT IDEA.

**Innovation for solutions of the future.**

### DEVELOPMENT

We have the capability and skill set to design, engineer, and manufacture a broad range of products for customers within, but not limited to, our traditional automotive end markets.

In 2021, we established our Martinrea Innovation Development (MiND) initiative, dedicated to incubating, developing, and funding innovative technologies. We are deploying more resources than ever before and accelerating the pace of innovation.

### SPECIAL NOTE REGARDING FORWARD- LOOKING STATEMENTS

---

This document contains or may contain forward-looking statements within the meaning of applicable Canadian securities laws, including statements related to the Company's intentions, beliefs or expectations as to its current or future sustainability strategy and initiatives, benefit of those strategies to the Company and/or its customers, and/or the environment. The words "continue", "expect", "anticipate", "estimate", "may", "will", "should", "views", "intend", "believe", "plan", "outlook" and similar expressions are intended to identify forward-looking statements. Forward-looking statements are based on estimates and assumptions made by the Company in light of its experience and its perception of historical trends, current conditions and expected future developments, as well as other factors that the Company believes are appropriate in the circumstances, such as expected sales and industry production estimates, current foreign exchange rates (FX), timing of product launches and operational improvements during the period and current Board approved budgets. Many factors could cause the Company's actual results, performance or achievements to differ materially from those expressed or implied by the forward-looking statements, including, without limitation, the industry trends and risk factors outlined in the Company's Annual Information Form, Management Discussion and Analysis, and other public filings which can be found at [www.sedarplus.ca](http://www.sedarplus.ca). These factors should be considered carefully, and readers should not place undue reliance on the Company's forward-looking statements. The Company has no intention and undertakes no obligation to update or revise any forward-looking statements, whether as a result of new information, future events or otherwise, except as required by law. The common shares of Martinrea trade on The Toronto Stock Exchange under the symbol "MRE."







Connect with us!



[www.martinrea.com](http://www.martinrea.com)